

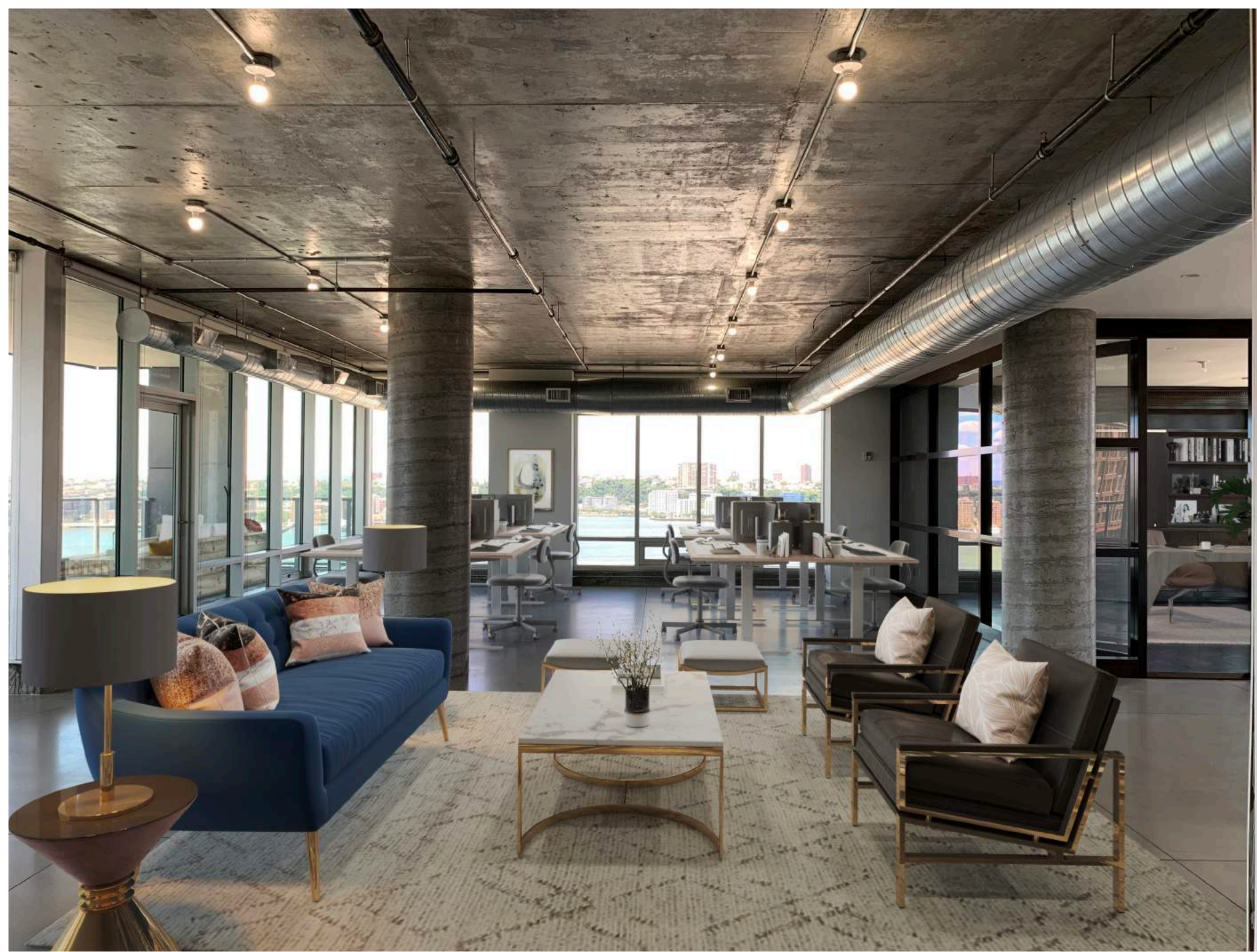


545W25

CHELSEA ARTS TOWER

HELM斯LEY SPEAR

Established 1866



SUNDRENCHED OFFICE SPACE FOR LEASE

SPACE

ENTIRE 19TH FLOOR – 4,095 SF

RENT

UPON REQUEST

TERM

LANDLORD OPEN TO EXTREMELY
SHORT-TERM LEASE

ELECTRIC

DIRECT

POSSESSION

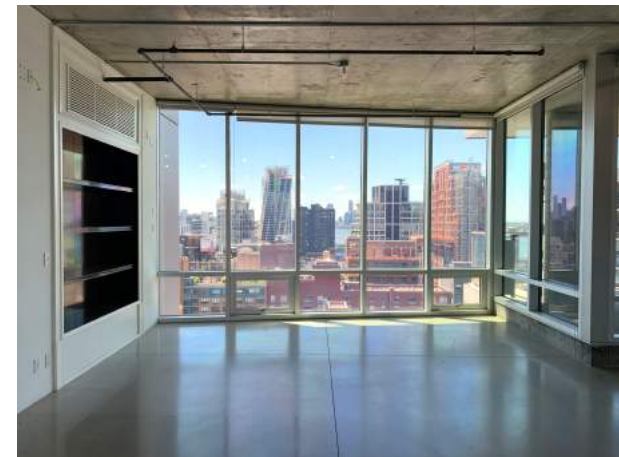
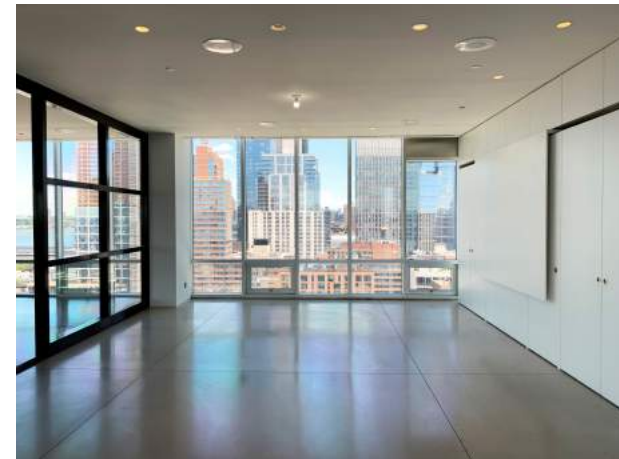
IMMEDIATE

ESCALATIONS

3% PER ANNUM
& REAL ESTATE TAX INCREASES

BUILDING FEATURES

- SOARING 13' CEILINGS
- POLISHED CONCRETE FLOORS
- MODERN LIGHTING WITH PROGRAMMABLE DIMMERS
- A/C SYSTEM THROUGHOUT
- KITCHEN & PANTRY WITH MODERN FINISHES
- HIGH SPEED FIBER INTERNET ACCESS
- 400 SF TERRACE WITH FABULOUS SOUTHWEST VIEWS
- 2 HIGH-SPEED PASSENGER ELEVATORS WITH DIRECT ACCESS TO THE SPACE

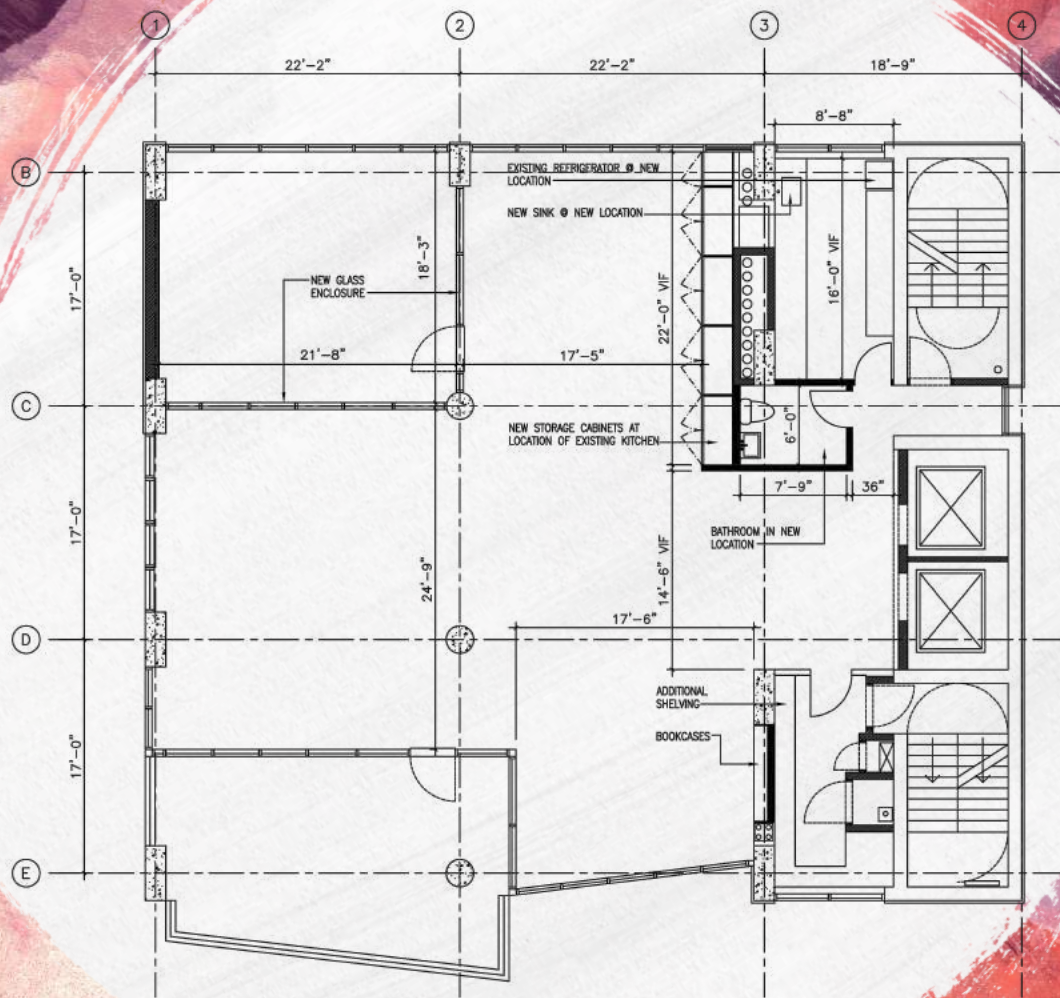


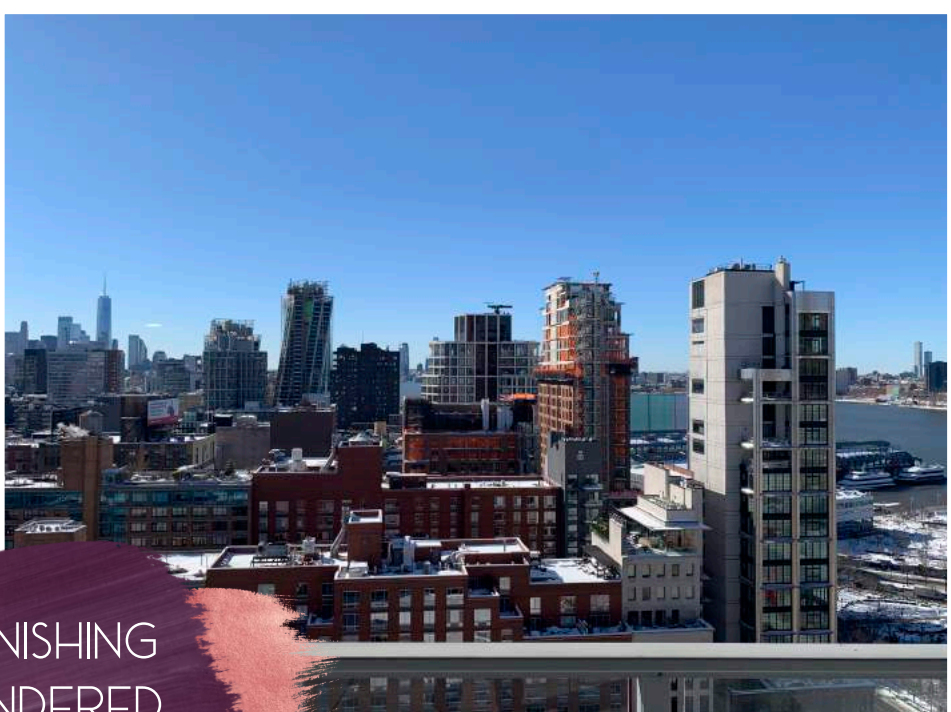


FLOOR PLAN

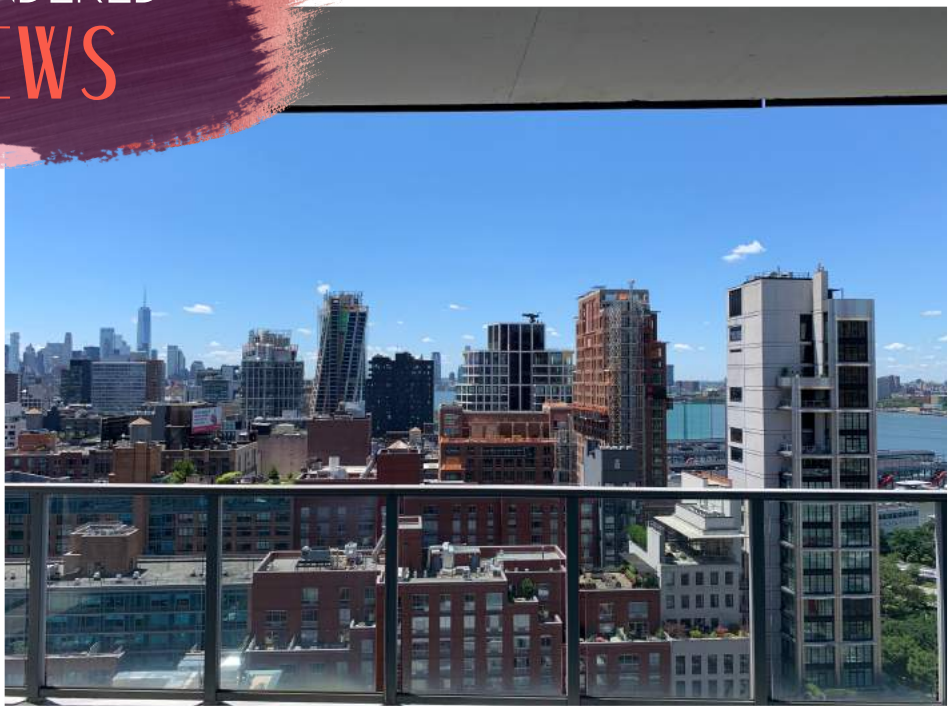
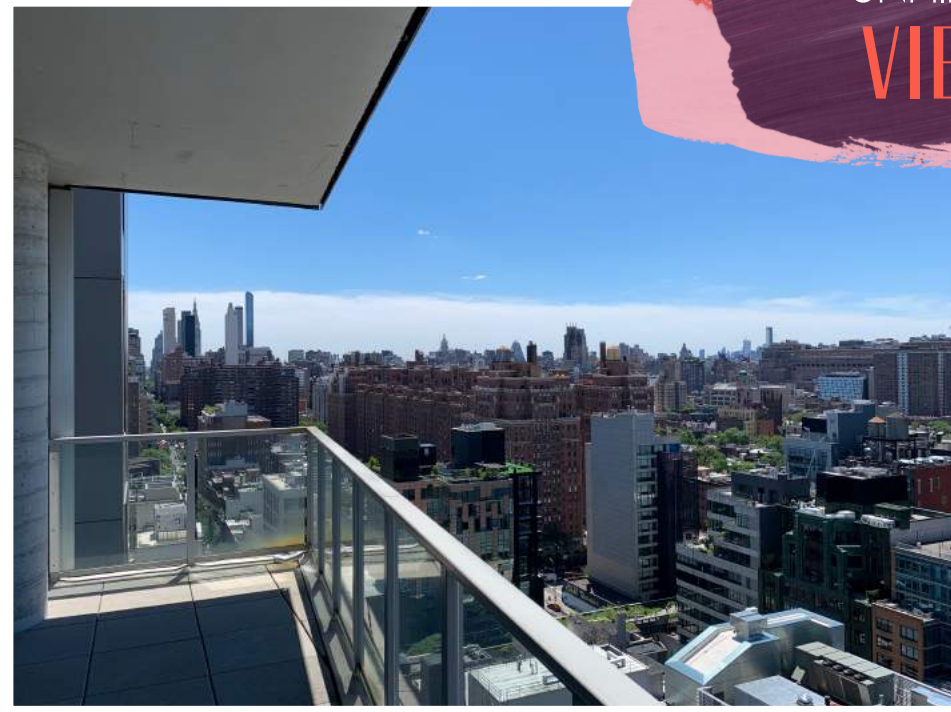
ENTIRE 19TH FLOOR

4,095 SF





ASTONISHING
UNHINDERED
VIEWS







WELCOME TO CHELSEA

THE HEART OF NEW YORK CITY'S ART DISTRICT AND ONE OF THE HOTTEST NEIGHBORHOODS. BE SURE TO TAKE A STROLL DOWN THE AMAZING HIGH LINE—AN ELEVATED PARK BUILT ON AN ABANDONED RAILROAD TRACK—UNLIKE ANYTHING YOU'VE SEEN BEFORE. WANDER THE COUNTLESS GALLERIES SHOWCASING BOTH ESTABLISHED AND EMERGING ARTIST'S WORK, EXPLORE THE THRIVING ENTERTAINMENT SCENE AND VISIT THE NEIGHBORHOOD'S FAMOUS NIGHTCLUBS, BUZZING BARS AND PERFORMING ARTS VENUES. YOU WON'T BE BORED IN CHELSEA.





545W25

CHELSEA ARTS TOWER

FOR MORE INFORMATION, PLEASE CONTACT:

ALAN WEISMAN

O: 212.938.6615 M: 917.991.1900
AWEISMAN@HELMSLEYSPEAR.COM

HELMSLEY SPEAR
Established 1866