



# 48 WALL STREET

CLASSIC RE-ENVISIONED

## AVAILABILITIES

ENTIRE 6TH FLOOR **14,231 RSF**

ENTIRE 24TH FLOOR **7,150 RSF**

ENTIRE 31ST FLOOR **3,950 RSF**

ENTIRE 32ND/33RD FLOOR **6,075 RSF**

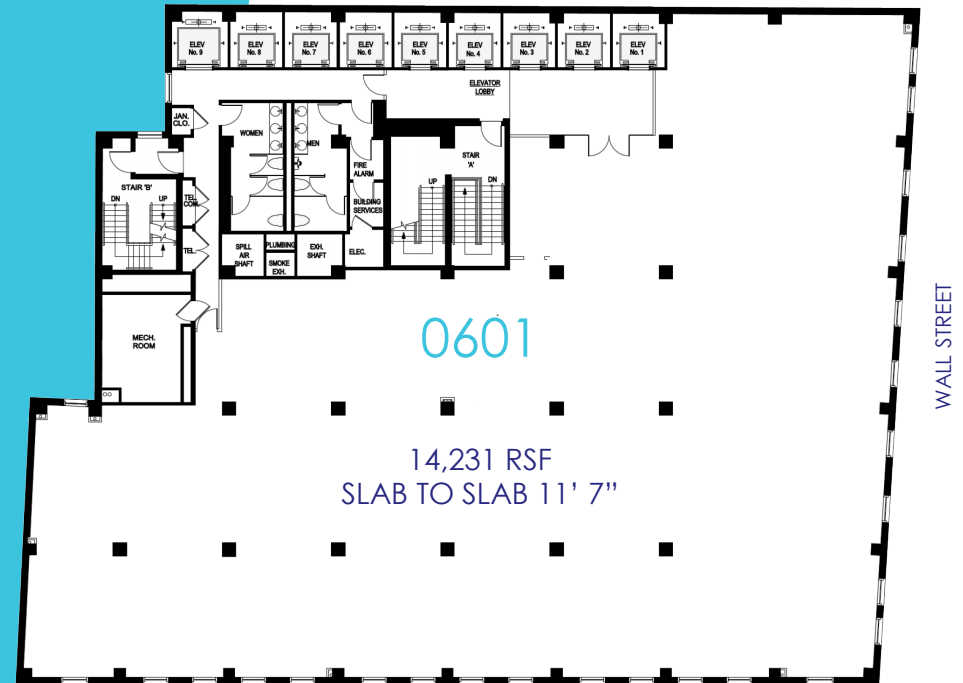


# 48 WALL STREET

CLASSIC RE-ENVISIONED

## ENTIRE 6TH FLOOR

14,231 RSF | SLAB TO SLAB 11' 7"



WILLIAM STREET

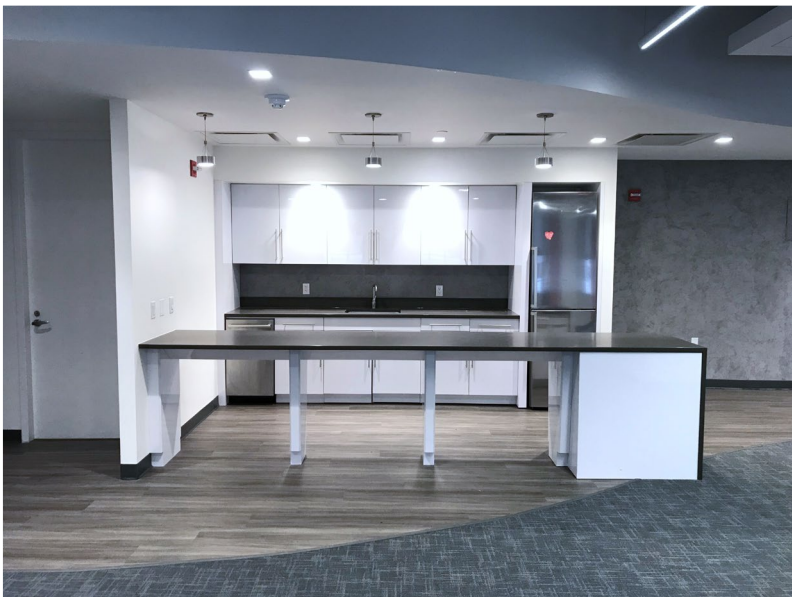


# 48 WALL STREET

CLASSIC RE-ENVISIONED



**ENTIRE 24TH FLOOR**  
7,150 RSF | SLAB TO SLAB 10' 7"



# 48 WALL STREET

CLASSIC RE-ENVISIONED

**ENTIRE 24TH FLOOR**  
7,150 RSF | SLAB TO SLAB 10' 7"

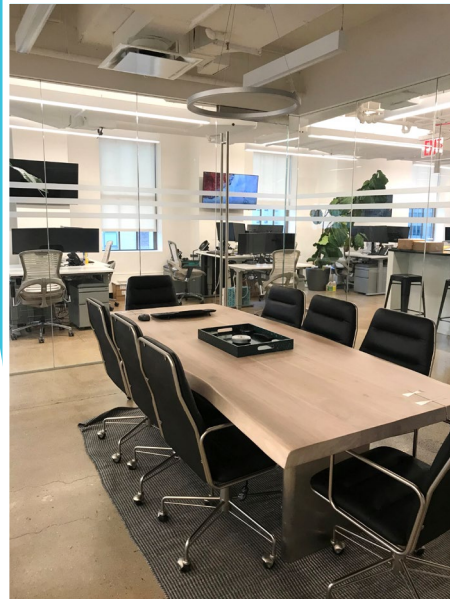
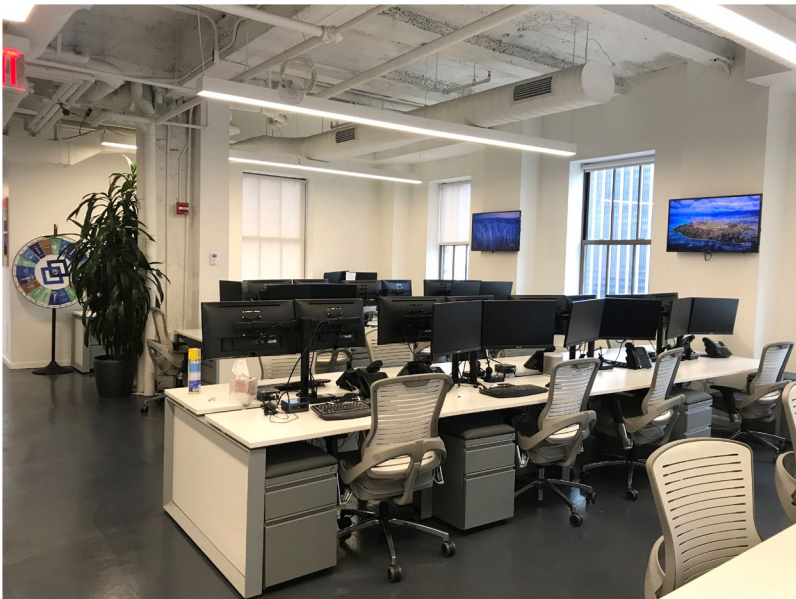




# 48 WALL STREET

CLASSIC RE-ENVISIONED

**ENTIRE 31ST FLOOR**  
3,950 RSF | SLAB TO SLAB 10' 8"





# 48 WALL STREET

CLASSIC RE-ENVISIONED

**ENTIRE 31ST FLOOR**  
3,950 RSF | SLAB TO SLAB 10' 8"



WALL STREET

WILLIAM STREET

# 48 WALL STREET

CLASSIC RE-ENVISIONED

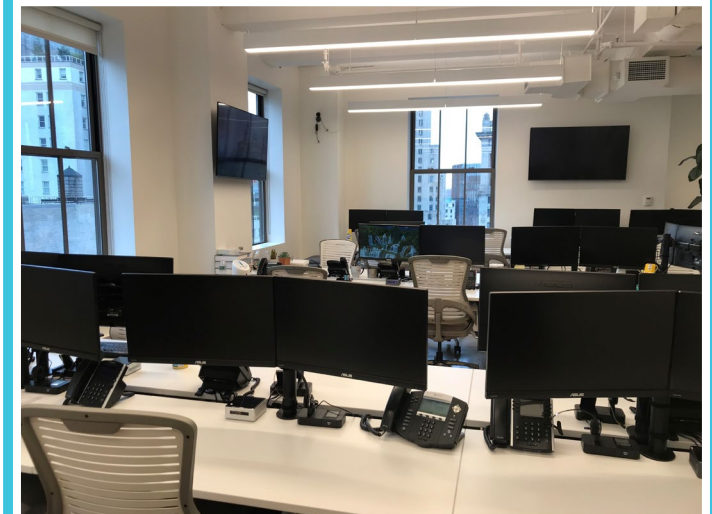


## ENTIRE 32ND/33RD FLOOR

6,075 RSF

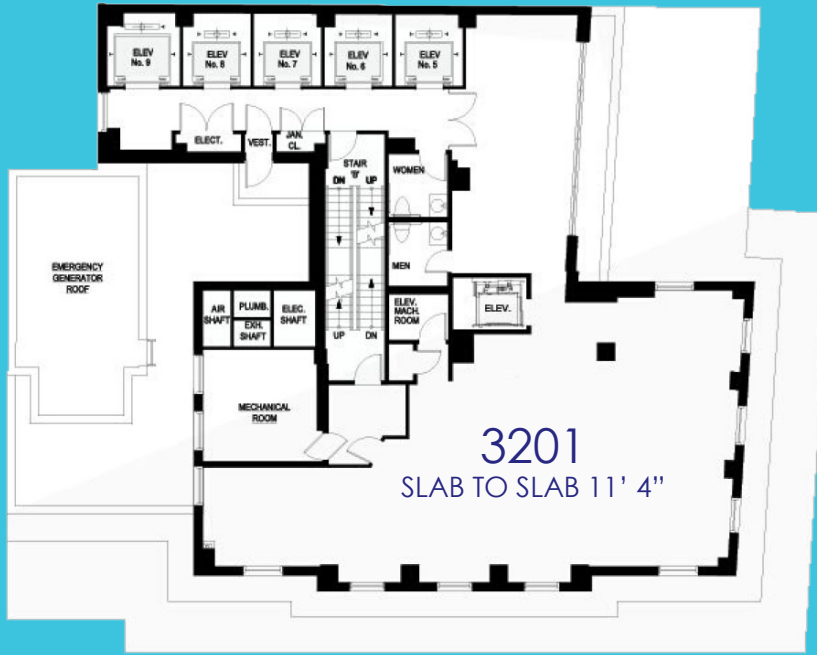
ENTIRE 32ND - SLAB TO SLAB 11' 4"

ENTIRE 33RD - SLAB TO SLAB 10' 5"



# 48 WALL STREET

CLASSIC RE-ENVISIONED



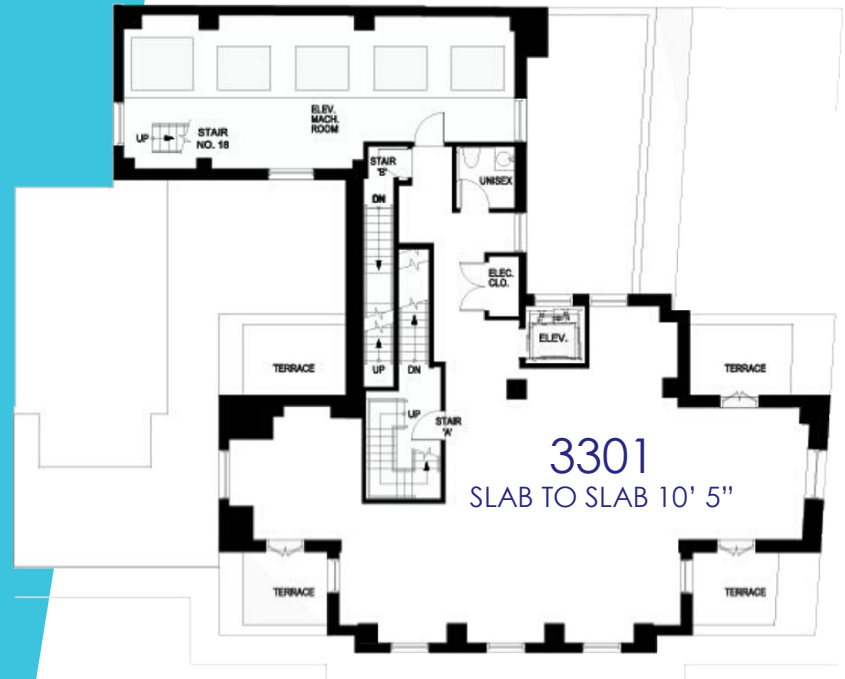
WILLIAM STREET

## ENTIRE 32ND/33RD FLOOR

6,075 RSF TOTAL

ENTIRE 32ND - SLAB TO SLAB 11' 4"

ENTIRE 33RD - SLAB TO SLAB 10' 5"



WILLIAM STREET





# 48 WALL STREET

CLASSIC RE-ENVISIONED

FOR MORE INFORMATION, PLEASE CONTACT:

**JAMES B. EMDEN**

VICE CHAIRMAN

O: 212.508.6237 M: 917.903.8873

JEMDEN@HELMSLEYSPEAR.COM

**RANDY SHERMAN**

EXECUTIVE MANAGING DIRECTOR

O: 212.938.6629 M: 914.772.0055

RSHERMAN@HELMSLEYSPEAR.COM

**ANDREW G. SIMON**

EXECUTIVE VICE PRESIDENT

O: 212.938.6613 M: 609.577.2136

ASIMON@HELMSLEYSPEAR.COM

**HELMSLEY SPEAR**

*Established 1866*