

355 LEXINGTON AVENUE

NORTHEAST CORNER OF EAST 40TH STREET & LEXINGTON AVENUE



8,790 RSF

ENTIRE 18TH FLOOR

RENT
UPON REQUEST

POSSESSION
ARRANGED

SUBLEASE TERM
THRU 5/17/2024
WILL CONSIDER SHORTER TERM

ELECTRIC
\$3.00 PSF

HIGHLIGHTS

- EXCELLENT UNOBSTRUCTED SOUTHERN VIEWS
- WINDOWS ON FOUR SIDES
- THREE GLASS WALLED PERIMETER OFFICES
- TWO GLASS WALLED CONFERENCE ROOMS
- INT. BREAKOUT ROOM/WELLNESS ROOM/PANTRY
- LARGE OPEN AREA CAN BENCH UP TO 64 POSITIONS
- FURNITURE AVAILABLE
- CLEANING INCLUDED
- EXCELLENT BUILDING OWNERSHIP & TENANT ROSTER
- SPACE IS FULLY WIRED – READY TO MOVE IN



VIEW FROM THE 18TH FLOOR

HELMSLEYSPEAR

Established 1866

FOR MORE INFORMATION, PLEASE CONTACT:

ERIC LASOFF

917.776.5909

elassoff@helmsleyspear.com

RANDY SHERMAN

914.772.0055

rsherman@helmsleyspear.com

355 LEXINGTON AVENUE

NORTHEAST CORNER OF EAST 40TH STREET & LEXINGTON AVENUE



HELMSLEYSPEAR

Established 1866

FOR MORE INFORMATION, PLEASE CONTACT:

ERIC LASOFF

917.776.5909

elassoff@helmsleyspear.com

RANDY SHERMAN

914.772.0055

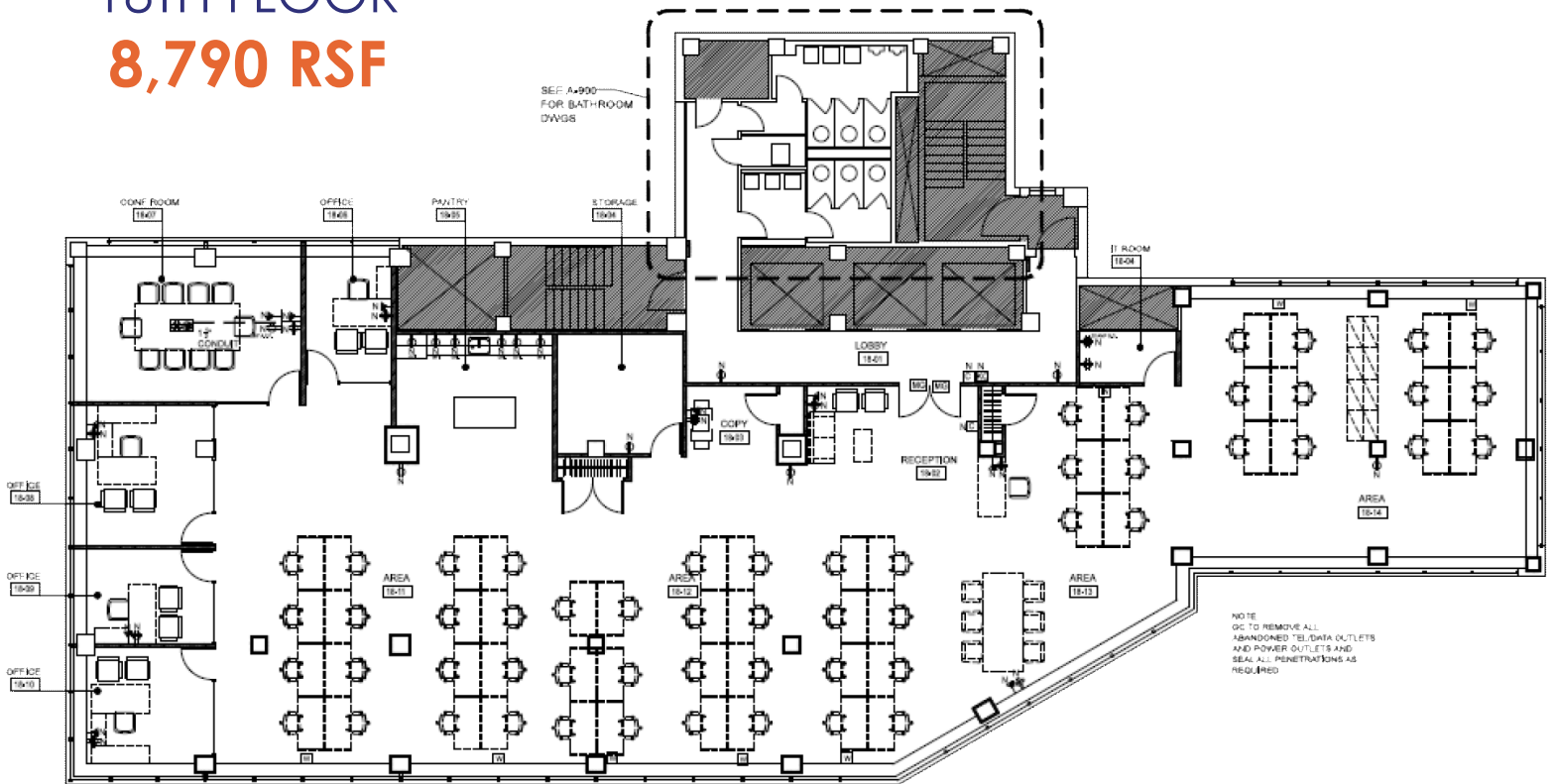
rsherman@helmsleyspear.com

355 LEXINGTON AVENUE

NORTHEAST CORNER OF EAST 40TH STREET & LEXINGTON AVENUE



18TH FLOOR
8,790 RSF



HELMSLEYSPEAR

Established 1866

FOR MORE INFORMATION, PLEASE CONTACT:

ERIC LASOFF

917.776.5909

elassoff@helmsleyspear.com

RANDY SHERMAN

914.772.0055

rsherman@helmsleyspear.com

355 LEXINGTON AVENUE

NORTHEAST CORNER OF EAST 40TH STREET & LEXINGTON AVENUE

CLICK TO JOIN US FOR A **VIDEO TOUR**



HELMSLEYSPEAR

Established 1866

FOR MORE INFORMATION, PLEASE CONTACT:

ERIC LASSOFF

917.776.5909

elassoff@helmsleyspear.com

RANDY SHERMAN

914.772.0055

rsherman@helmsleyspear.com