

295 MADISON AVENUE

SOUTHEAST CORNER OF EAST 41ST STREET



FOR LEASE
ENTIRE 30TH FLOOR
3,900 RSF

PREMISES
ENTIRE 30TH FLOOR

ASKING RENT
UPON REQUEST

SQ. FOOTAGE
3,900 RSF

POSSESSION
ARRANGED

LEASE TERM
THRU 8/30/23
WILL CONSIDER SHORTER TERM

ELECTRIC
DIRECT

HIGHLIGHTS

- BRAND NEW HIGH END PREBUILT
- STATE-OF-THE-ART BUILDING SYSTEMS
- MODERN FINISHES
- GLASS FRONT OFFICES
- GLASS FRONT CONFERENCE ROOMS
- NEW PANTRY & BATHROOM
- HIGH-SPEED FIBEROPTICS INTERNET
- EQUIPPED WITH \$15K WORTH OF INTERNET HARDWARE
- CUSTOM MADE SOLID WOOD DESKS & CONF ROOM TABLES
- HERMAN MILLER AERON DESK CHAIRS
- REMOTE CONTROLLED AUTOMATIC BLINDS
- 3 MASSIVE PROJECTION SCREENS FOR MEETINGS
- TWO OWL CONFERENCE ROOM SOLUTIONS
- KEGERATOR FOR BEER OR OTHER TAP BEVERAGES

HELMSLEYSPEAR

Established 1866

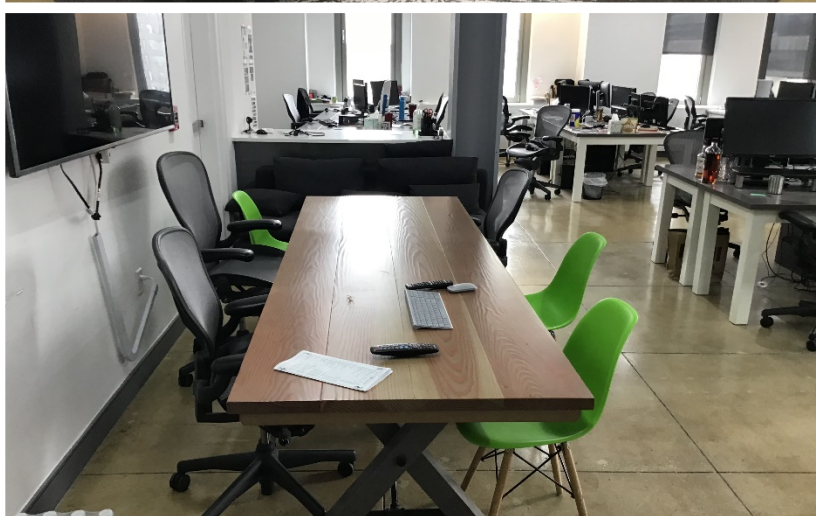
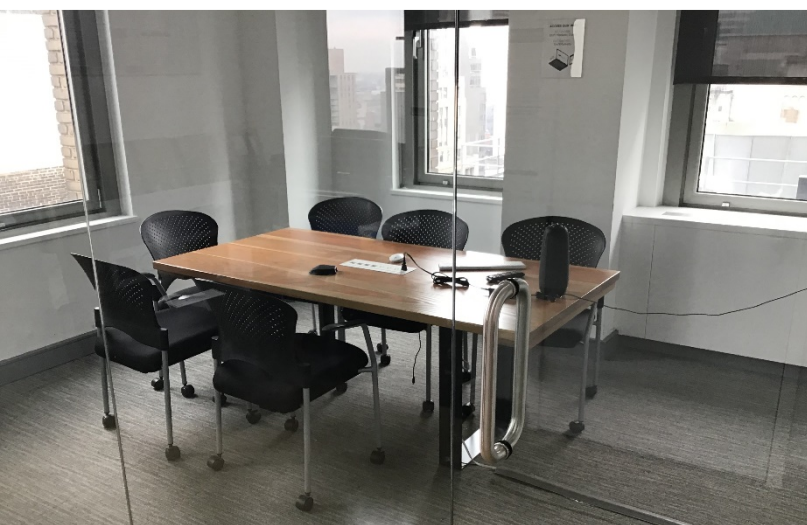
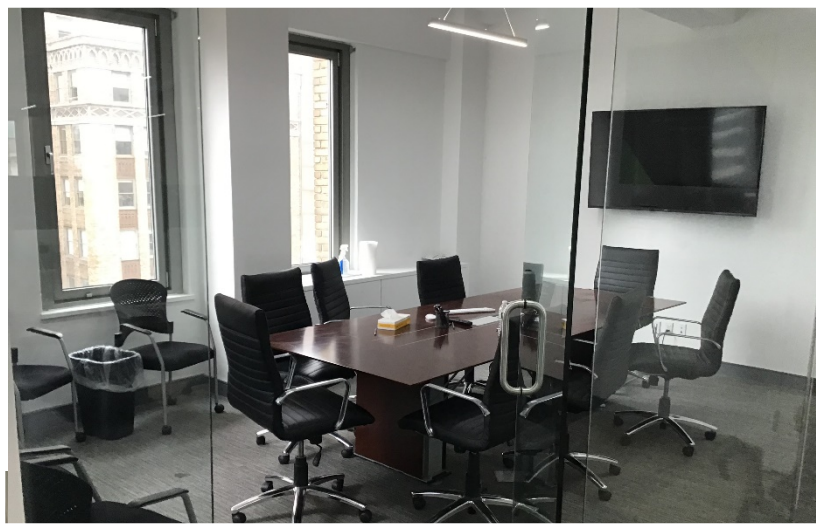
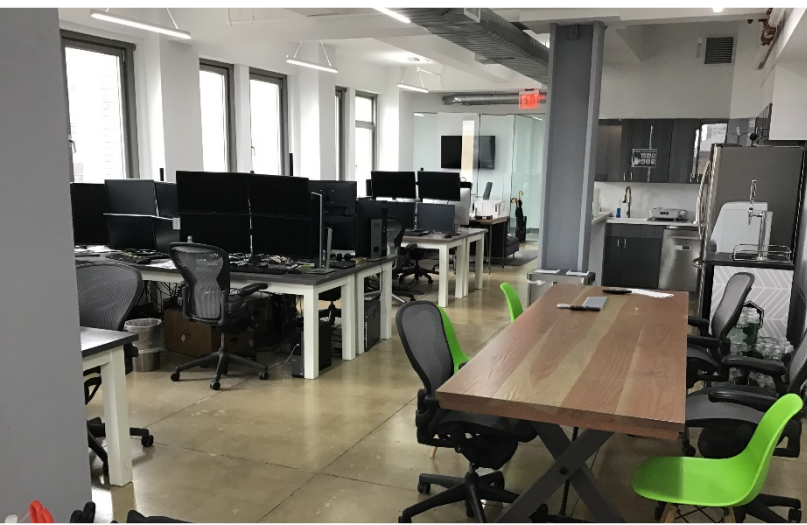
FOR MORE INFORMATION, PLEASE CONTACT:

RANDY SHERMAN
914.772.0055
rsherman@helmsleyspear.com

ERIC LASSOFF
917.776.5909
elassoff@helmsleyspear.com

295 MADISON AVENUE

SOUTHEAST CORNER OF EAST 41ST STREET



HELMSLEYSPEAR

Established 1866

FOR MORE INFORMATION, PLEASE CONTACT:

RANDY SHERMAN

914.772.0055

rsherman@helmsleyspear.com

ERIC LASOFF

917.776.5909

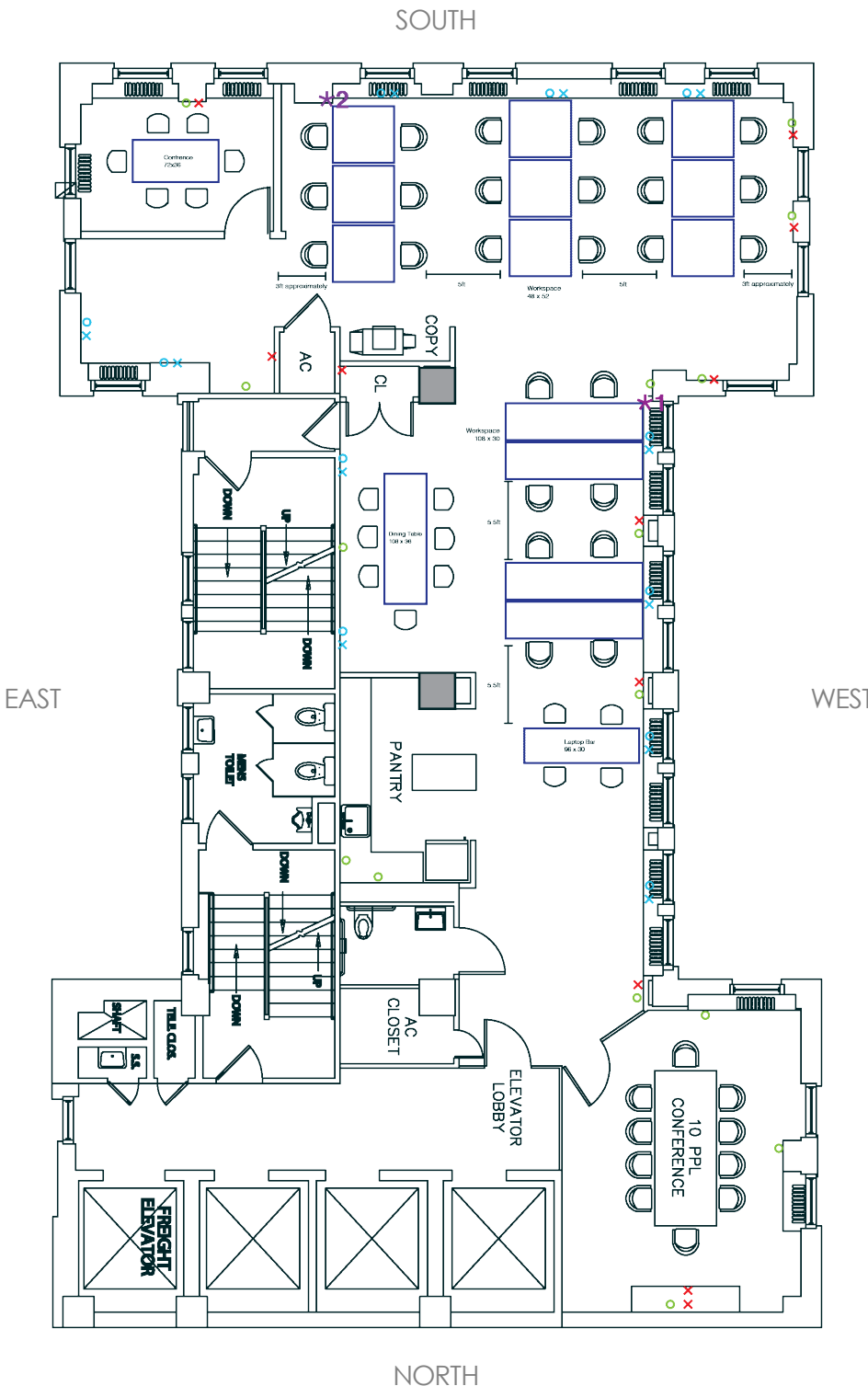
elassoff@helmsleyspear.com

295 MADISON AVENUE

SOUTHEAST CORNER OF EAST 41ST STREET

FLOOR PLAN

30TH FLOOR
3,900 RSF



DESK CHAIR

MISC. CHAIR

FURNITURE POSITION

POWER / DATA NEEDS

ETHERNET POSSIBLE ETHERNET

POWER POSSIBLE POWER

***1**

START FURTHEST FRONT TABLE ON THE RIGHT SIDE OF THE ELECTRICAL OUTLET

***2**

FIRST BACK TABLE NEAR CONFERENCE ROOM 6" FROM THE LEFT OF LINE ON THE AC UNIT

HELMSLEYSPEAR

Established 1866

FOR MORE INFORMATION, PLEASE CONTACT:

RANDY SHERMAN

914.772.0055

rsherman@helmsleyspear.com

ERIC LASSOFF

917.776.5909

elassoff@helmsleyspear.com

295 MADISON AVENUE

SOUTHEAST CORNER OF EAST 41ST STREET

CLICK TO JOIN US FOR A **VIDEO TOUR**



HELMSLEYSPEAR

Established 1866

FOR MORE INFORMATION, PLEASE CONTACT:

RANDY SHERMAN

914.772.0055

rsherman@helmsleyspear.com

ERIC LASSOFF

917.776.5909

elassoff@helmsleyspear.com